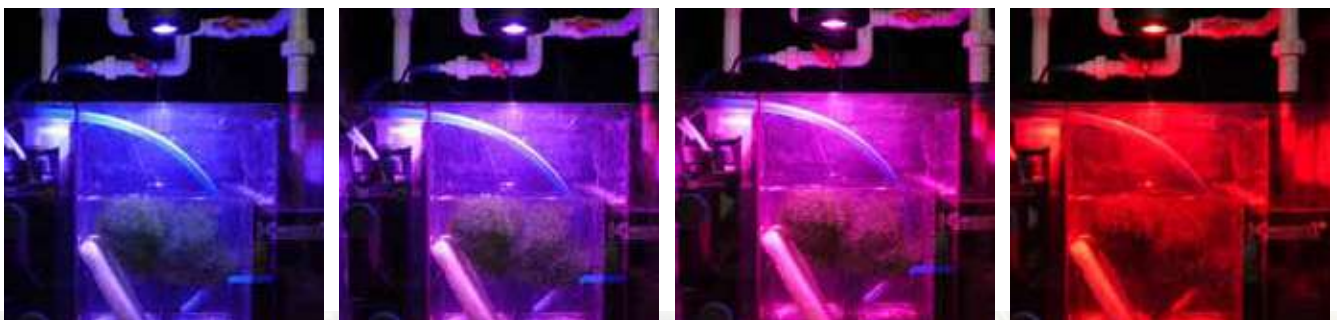
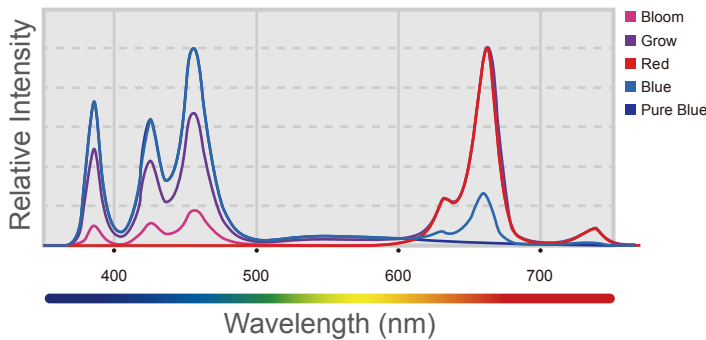


- ▶ Specific wavelengths for algae/plant growth
- ▶ High Efficiency
- ▶ Tunable Spectrums and Intensities
- ▶ 0-10V Controller Compatibility
- ▶ Coverage up to 24"
- ▶ Passive Cooling
- ▶ Elegant Design



Specifications

Model Number	KSH80-TF
Wattage	15W
Unit Weight	0.88 lb / 0.4kg
Unit Dimensions	Outer Diameter=4.88" / 12.4cm Height=0.98" / 2.5cm
Power Supply	100-240V AC (input) / 24V DC (output)

What's in the Box



· H80 - Tuna Flora



· DC Power Supply



· Top Mounting Adapter



· Phillips Wood Screw (x2)

Light & Accessories Information

	 H80 - Tuna Flora	 Mini A-Series Gooseneck	 90° Unit Link Cable
Model Number	KSH80-TF	KSAGN03	KSULC10
Upc	092145341926	092145341162	092145341216
Unit Weight	0.88 lb / 0.4kg	0.73 lb / 0.33kg	0.15 lb / 0.07kg
Unit Dimensions	Outer Diameter=4.88" Height=0.98" / Outer Diameter=12.4cm Height=2.5cm	Outer Diameter=0.57" Height=10" / Outer Diameter=1.44cm Height=25.4cm	L = 10ft / 3m
Single package Weight	1.69 lb / 0.77kg	0.9 lb / 0.41kg	0.15 lb / 0.07kg
Single package Dimensions	L 7.76" x W 6.1" x H 3.3" / L 19.7cm x W 15.5cm x H 8.4cm	L 11.89" x W 3.07" x H 2.05" / L 30.2cm x W 7.8cm x H 5.2cm	L 5.12" x W 7.28" x H 0.79" / L 13cm x W 18.5cm x H 2cm
Case Qty	15	14	10
Case Dimensions	L 19.33" x W 17.52" x H 9.06" / L 49.1cm x W 44.5cm x H 23cm	L 23.11" x W 12.95" x H 6.46" / L 58.7cm x W 32.9cm x H 16.4cm	L 17.72" x W 14.57" x H 7.48" / L 45cm x W 37cm x H 19cm
Case Weight	29.32 lb / 13.3kg	15.01 lb / 6.81kg	11.6 lb / 5.26kg
Case Upc	092145341933	092145341179	092145341216